



# GPMC FLB 16 BARGE

## Technical Specification sheet

### General Application

The **FLB 16** is a non-propelled, un-manned, steel deck barge with a raked bow, square launch stern and flush deck, designed for transportation of heavy cargos, launching of jackets, float-over of topsides. The barge is adequately equipped to do transportation & float-over operations of offshore topside modules structures weighing up to 14500 tons and for launching Jackets up to 20000 tons. The barge is equipped with Rapid Ballast System which in combination with four ballastable pumps can achieve close to 2 m submergence in 1 hour and 20 minutes, making it high performance for floatover projects. **One such unit built by SapuraKencana Petroleum Berhad (SKPB) christened as FLB-1 was launched on March 2014.**

### Main Particulars

#### Hull

Hull length (OA)	160.00m
Hull Breadth (Moulded)	38.00 / 46.00m
Hull Depth (Moulded)	10.00m
Draft Loadline	7.00m
Gross Tonnage (GRT)	18115
Net Tonnage (NRT)	5434

#### Capacities

Total Ballast Tanks	48,770MT
Deck Loading	20.0 MT/m <sup>2</sup> -25.0 MT/m <sup>2</sup>

### Machinery and Outfitting

Ballast Pumps	4 x 2000M <sup>3</sup> /hr @ 16mwc, electric
Anchor	One HHP with weight 4890 Kg
Anchor Chain	Dia 60mm x 325m, U3 standard link
Anchor Windlass	One hydraulically operated windlass
Mooring Capstans	2x12T hydraulic capstan Fwd & Aft
Mooring winches	2x35T and 4x50T electric
Bollards, Smit Brackets, Chocks	As suitable for towing and mooring

**\*\* Note:** Load-out and Launch winches are provided project specific.


### Power Generation and Distribution

Main Generators	3x 680 kWe, 440V/3Ph/60 Hz (Cummins)
Harbour Generator	1x 100 kWe, 440V/3Ph/60Hz
On-board Supply	
-Main Power	440V/3Ph/60Hz,
- General Lighting and Utilities	220V/1Ph/60Hz,
- Navigation and Communication	220V/1Ph/60Hz,
- Emergency lighting	220V with battery backup
Shore Supply	440V/3Ph/60Hz

### Floatover & Launch Capabilities

Rocker Arms	2 x double acting, L= 30m
Skid Beams	2 x 126m, 10m-31m spacing
Jacket Launch	16000 MT- 20000 MT (Depending upon VCG)
Topside Float-over	14500 MT (VCG up to 29m from base line)

### Classification

ABS  A1 Unrestricted Tank Barge/ Jacket Launch & Float-over Barge



SapuraKencana FLB1 Barge Picture

### Instrumentation & Controls

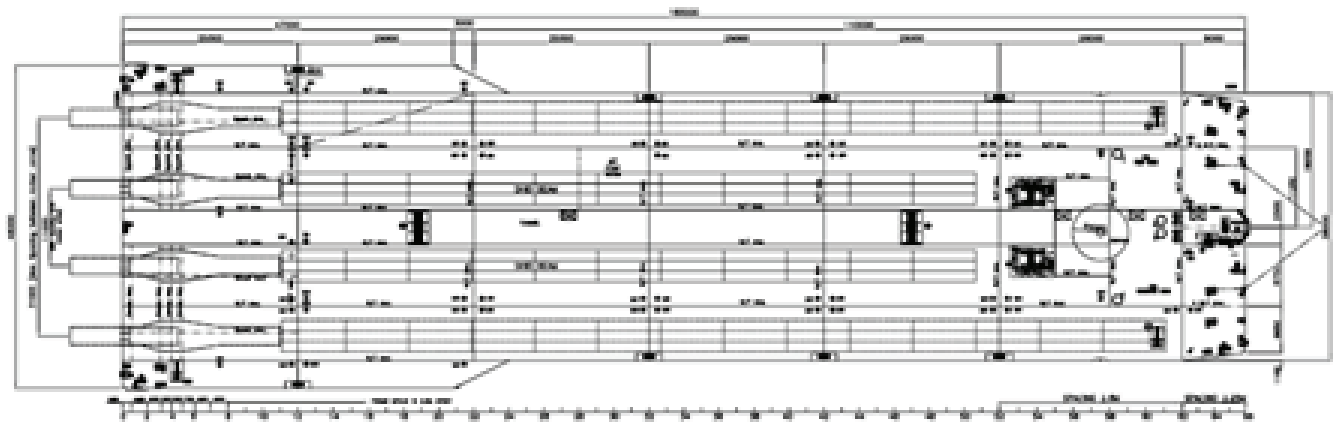
The controls are provided in the control room and pump room. Unit is equipped with Tank Gauging System, Draft Sensors, Automatic Valve Control, Pump Control, Watertight Door Monitoring System, Bilge Alarm Monitoring System.

The unit is also provided with Emergency Shutdown System.

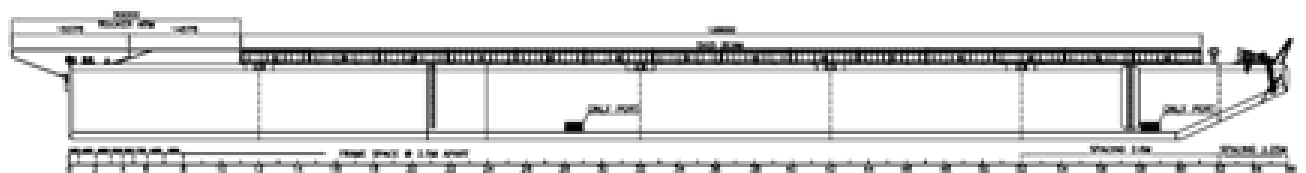
**\*\* Designer reserves the right to amend the specifications without notifications.**

**\*\* The specifications mentioned in this document are proprietary to Green Palm Marine Consultancy UK.**

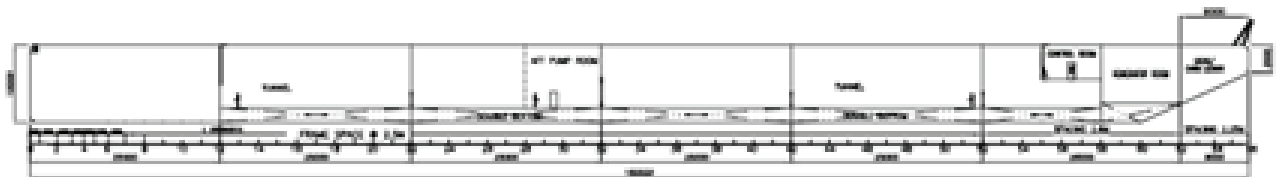
## General Arrangement Plans and Pictures



MAIN DECK PLAN



OUTBOARD PROFILE (PORT & STBD)



CENTER LINE PROFILE

